

Window

Dati tecnici | Technical data

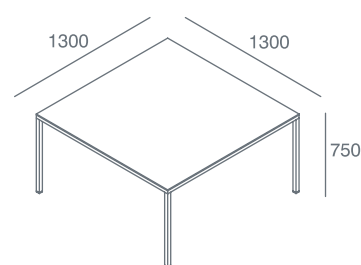
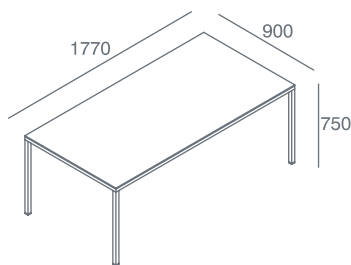
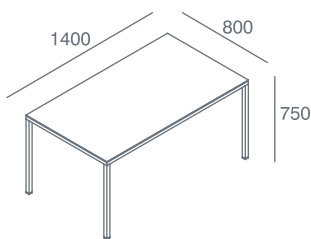
Tavoli fissi con struttura in tubo metallico sezione 30 x 30 mm in acciaio verniciato nero o bianco, cromo lucido o cromo nero. Piani in vetro sp.8 mm temperato in extrachiaro trasparente laccato, antigraffio laccato, landing e con texture.

Fixed tables with metal tube-shaped structure, 30 x 30 mm section, black or white painted steel, bright chrome or black chrome.

Glass tops, 8 mm thick: tempered, extra-light transparent lacquered, anti-scratch lacquered, Landing and textured glass.

Disegni tecnici | Technical drawing

Quote espresse in mm | Measures expressed in mm



Vetri | Glass

	Laccato Lacquered	Laccato Antigraffio Anti-scratch Lacquered	Landing Landing	Texture Textures
Piano Top	•	•	•	•

Struttura | Structure



Bianco
White



Nero
Black



Cromo Lucido
Bright chrome



Cromo Nero
Black chrome

Colori vetri | Glass colors



Bianco
White



Nero
Black

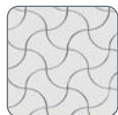


Rosso chiaro
Light red



Colori Krios
Krios Colors

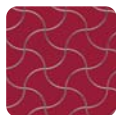
Texture | Textures



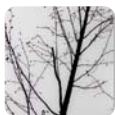
T07



T08

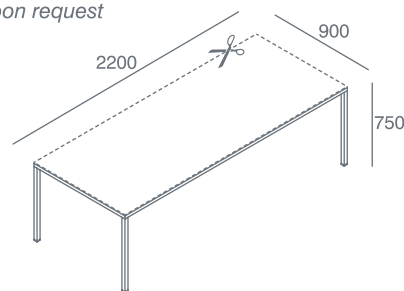
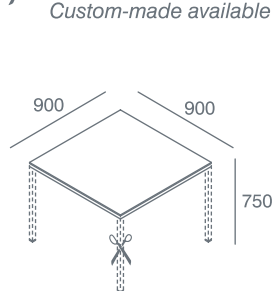


T09



T10

✂ Disponibili a misura su richiesta
Custom-made available upon request



krios